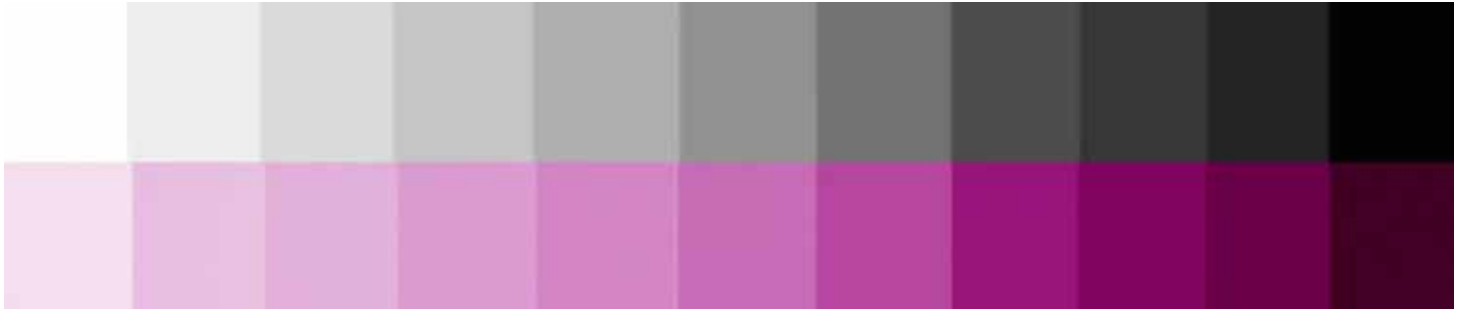
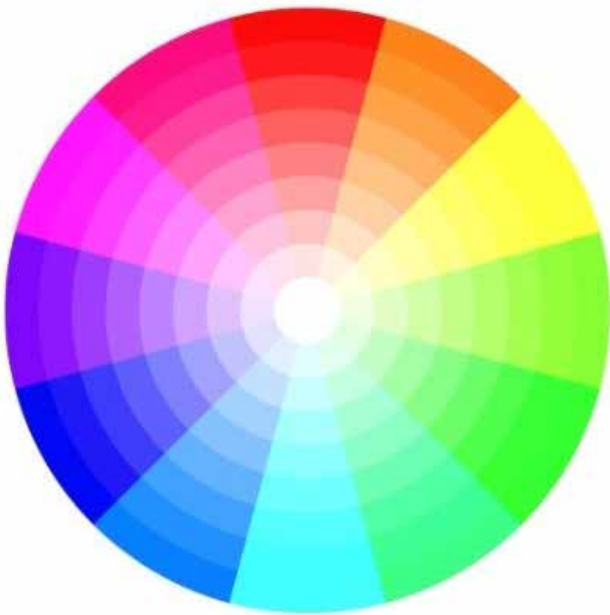


## Degrees of Lightness or Darkness

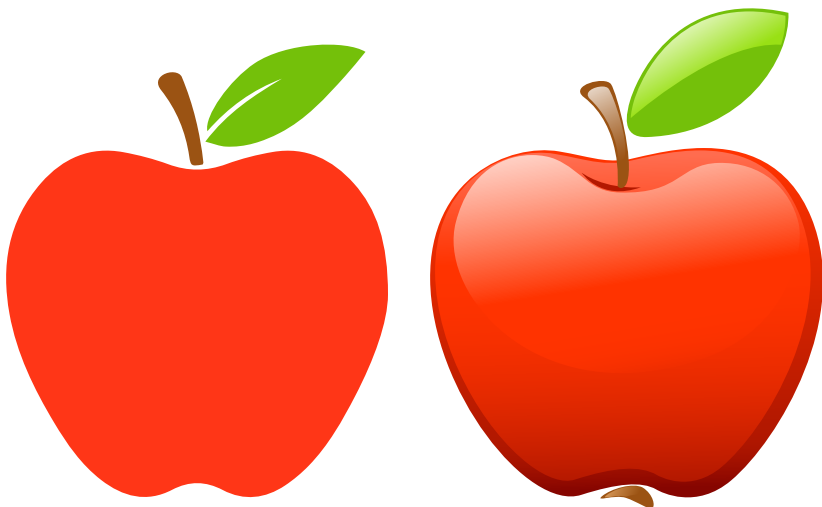


The value refers to relative lightness or darkness of a color. It indicates how much white or black is contained in a color.

## The Color Wheel is Also a Value Scale



## Value Gives Shape a Dimension



The value helps to create the illusion of mass and volume of an object. It is used to create a 3D effect by making 2D appear three-dimensional through the use of light (white) and dark (black). The left apple has only one value and therefore appears flat and two-dimensional. The right apple has a range of values from light to dark. This range of values creates the illusion that the apple has form and is three-dimensional.